



# Autoclave Rentals

One monthly payment. No hassle, no hidden charges.





# High-speed sterilization

## Superior capacity and efficiency

The Getinge K-Series Autoclaves are exceptionally fast, high-capacity benchtop models. In fact, one autoclave does the job of two.



In just 25 minutes, you can sterilize up to 10 trays using the B-process program. That means 20 trays per hour. If you only need a flash program for unwrapped solid instruments, it takes a mere 9 minutes.

It all means quickly getting the goods back in circulation, thereby sharply reducing the number of instruments your clinic requires.

Getinge is the world's largest supplier of autoclaves and washer-disinfectors, with equipment installed in more than 100 countries.

Renting your Getinge autoclave from CMI will ensure the peace of mind that your equipment is designed to the highest standards of quality, performance and reliability.

# Rectangular chamber

utilising nearly 100% of the volume

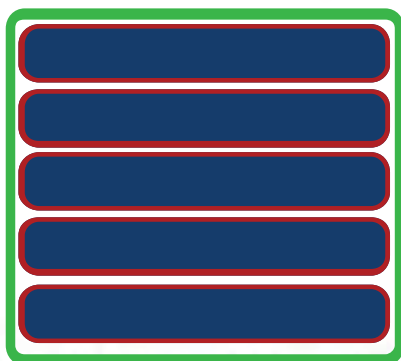
The Getinge K-Series Autoclaves have rectangular chambers that utilises nearly 100% of the volume when sterilizing trays and cassettes. In a round chamber, 25% of the volume is wasted space.

The chamber volume of a benchtop autoclave in litres provides a rough picture of the loading capacity and this criteria works well as long as you compare autoclaves with the same chamber shape. However, if you compare autoclaves with different chamber shapes, the volume in litres may be misleading.

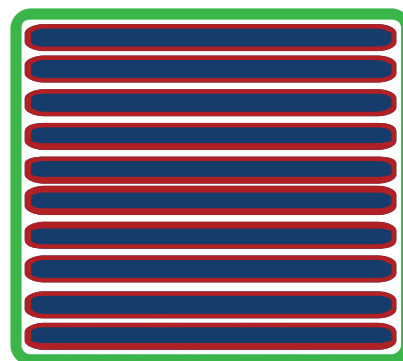
The chamber shape is decisive for the loading capacity, so don't just look at the litres, count the trays/cassettes!

## Safe sliding door

Did you know that autoclave doors are subjected to a full ton of pressure? Conventional autoclave doors have to rely on the hinges and lock to resist that force. The Getinge K-Series offer a safer solution - a sliding door built into robust rails. This design also protects the user from contact with the hot inside surface of the door and doesn't interfere with the often limited space in front of the autoclave.



15L (5 x 38mm cassettes)



15L (10 x 19mm Trays)

## Easy to use and care for

User-friendliness and easy maintenance and other priorities in the Getinge K-Series autoclaves.



# Autoclave Rental

One monthly price, no hassle, no hidden charges.

Annual testing to HTM01-05, breakdowns, servicing, PVI and spares are all included in the rental agreement.

All prices are exclusive of VAT

## 3 year (36 month) Plan

## 5 year (60 month) Plan

Getinge K5+ (15L)	£POApm
Getinge K7+ (20L)	£POApm
1 x Annual Service and Test to HTM01-05 per year	✓
Breakdowns & Parts	✓*
1 x Annual PVI per year (pressure vessel inspection)	✓
Installation/Commissioning & User Training	✓
Option to purchase	POA

Getinge K5+ (15L)	£POApm
Getinge K7+ (20L)	£POApm
1 x Annual Service and Test to HTM01-05 per year	✓
Breakdowns & Parts	✓*
1 x Annual PVI per year (pressure vessel inspection)	✓
Installation/Commissioning & User Training	✓
Option to purchase	POA

\*Excluding user error



Getinge K5+ 15L  
W526 x D570 x H485mm

Available in white or stainless steel



Getinge K7+ 20L  
W526 x D570 x H620mm

# Technical data

## Getinge K-Series standard programs

Process type	Program	Process time
B process	134°C Wrapped	25min
B process	121°C Wrapped	35min
B process	134°C Textile	45min
B process	134°C 18 minutes	40min
S process	134°C Dental Special*	16min
N process	134°C Flash	9min
Test program	Bowie & Dick	22min
Test program	Leakage Test	11min
Standalone or direct RO water connection options available		

\*For up to 10 wrapped hand pieces  
Process times are load dependent and approximate.



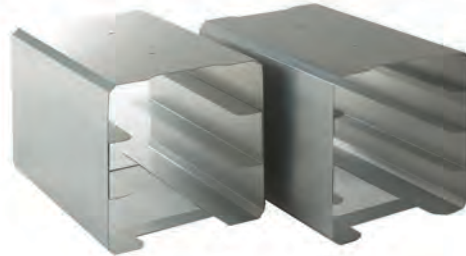


# Accessories

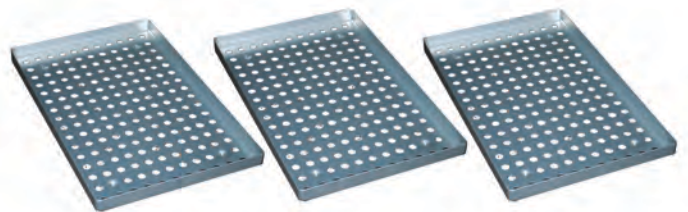
## A selection of accessories for your autoclave

### Accessories included with your rental package:

A rack insert that can support either  
3 x 70mm trays/cassettes  
4 x 52mm trays/cassettes  
5 x 52mm trays/cassettes  
10 x 20.5mm trays



3 perforated aluminium trays



1 silicone grabber for safe, easy tray removal



1 thermal printer



### Optional accessories:

Reverse osmosis systems which can be installed to directly feed your autoclave (additional £10 per month)  
Price includes servicing and filters for the rental period.



NetCom USB cycle logging system (additional £12 per month)



Other accessories available.



### **Servicing & Maintenance**

Autoclaves/Washer Disinfectors/Ultra-sonic cleaners



### **Testing/Validation**

EN285/EN15883/HTM01-01/HTM01-05



### **UKAS Calibration**

Autoclaves/Fridges/Freezers/Ovens/Thermometers/Gauges



### **Spare parts and consumables sales**

UK's largest independent spare parts stockists



### **Capital equipment sales**

Getinge/Rodwell/Astell autoclaves and washers

**01344 621378 • [sales@cmihealthcare.co.uk](mailto:sales@cmihealthcare.co.uk) • [www.cmihealthcare.co.uk](http://www.cmihealthcare.co.uk)**

**CMI House • 5 Rise Road • Sunningdale • Berkshire • SL5 0BH**

