

Ambassador 158DE

Specification for Ambassador 158E pass through autoclave with an interlocked door at each end.

Design Features

- 158 litres
- MP25 Control
- Robust space-saving design

Optional Accessories

- Waste siscard system
- Scale prevention systems

Optional Accessories (continued)

- High speed fan accelerated cooling
- Range of cycle recording systems
- Air removal hepa filter
- Loading trolley
- Additional Baskets and trays
- Drain line condenser for plastic drains
- Vacuum air removal systems
- Integrated 9kW steam generator

Capacities and dimensions

Model

Autoclave weight
Export packing case
Overall dimensions
Chamber dimensions
Chamber usable capacity
Water requirement

Ambassador158

250 kg
760w x 1590h x1410d
650w x 1240h x1319d
460 Ø x 960d
150 litres
23 litres

All measurements are in mm unless explicitly stated otherwise

Safe Design Operating Limits

Model

Max working temperature
Min working temperature
Min ambient temperature
Max ambient temperature

Ambassador158

138° C
7° C
11° C
28° C

Max hydraulic pressure
Max working pressure
Max working vacuum

4.14 Bar
2.62 Bar
Minus 1 Bar

Site Requirements (Electric 'E' Models)

Electrical site requirement: 16AMP Type C MCB required

Model

Drain requirement
Voltage
Phase requirement
Power consumption
Fuse rating

Ambassador158

150°C 35mmØ copper
415 Volts
3ph/N 50/60 hz
9kw
16amp

Site Requirements (Direct Steam 'DS' Models)

Electrical site requirement: 16AMP Type C MCB required

Model

Mains Steam Supply
Drain requirement
Voltage
Phase requirement
Power consumption
Fuse rating

Ambassador158

35Lb p/hour @ 2.67bar
150°C 35mmØ copper
230Volts
1ph/N 50/60 hz
1kw
5amp

Option Requirements

- The auto fill / Boiler option requires a header tank of 25 litres placed between one & four metres above the autoclave.
- Air supply at 38psi 7cfm required for air ballasting option.
- Vacuum option with drying heater, will require Auto fill & Auto drain.
- The drain line condenser option requires a header tank of 15 litres placed between one & four metres above the autoclave

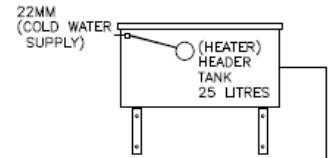
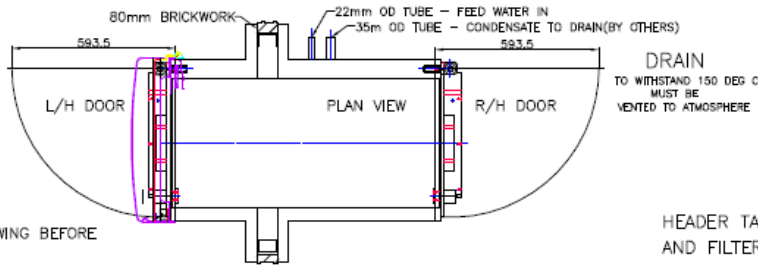
General Requirements

- Sodium Chloride within water supply MUST NOT EXCEED a level greater than 500 parts per million
- Use regular mains water only. DO NOT USE distilled or RO water.
- Steam required at 35Lb per hour at 2.67 Bar for direct steam models.



“The Ambassador is a heavy duty autoclave that is designed to meet the needs of any busy laboratory. With nine different variants to suit all your needs”

Typical Installation

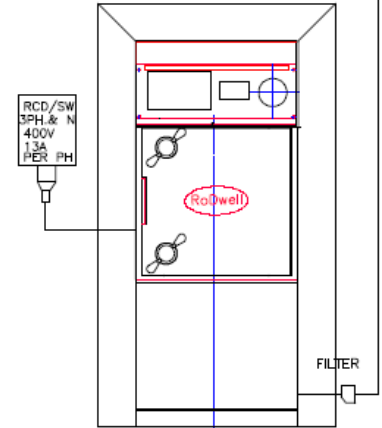
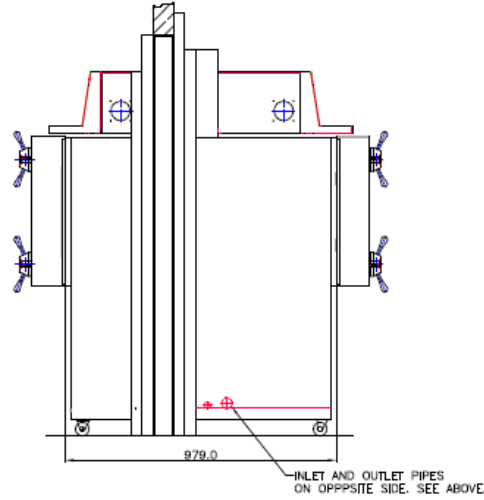
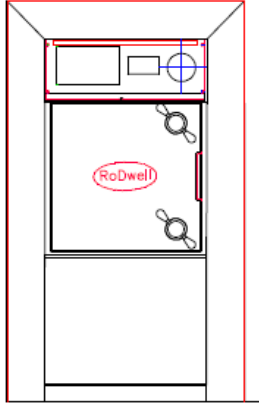


APPROVAL REQUIRED OF THIS DRAWING BEFORE MANUFACTURING CAN COMMENCE

- 1) CONFIRMATION OF WALL THICKNESS
- 2) HANDING OF DOOR ON EACH SIDE AS SHOWN

HEADER TANK, BRACKETS, WATER FEED PIPE AND FILTER BY CLIENT.

PRESSURE AT PUMP 0.2 BAR MIN
1.9 BAR MAX

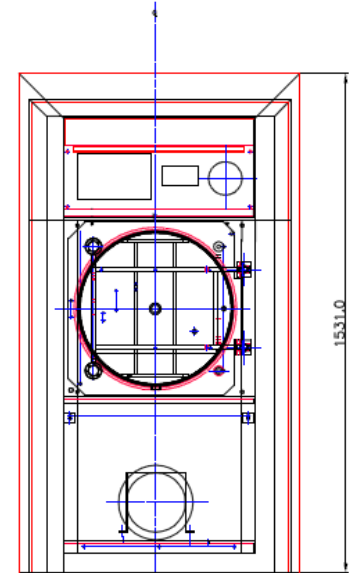
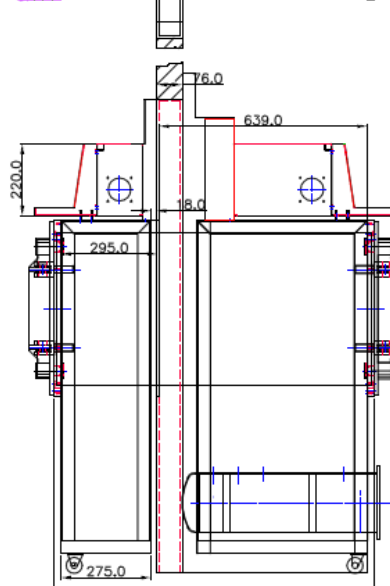
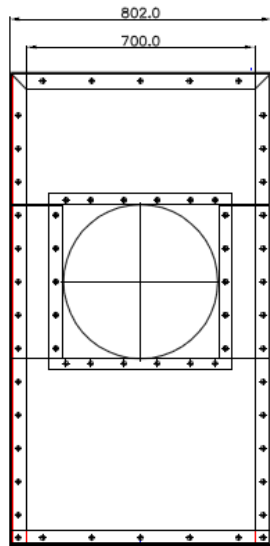
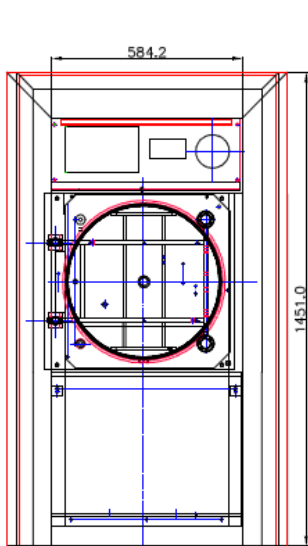
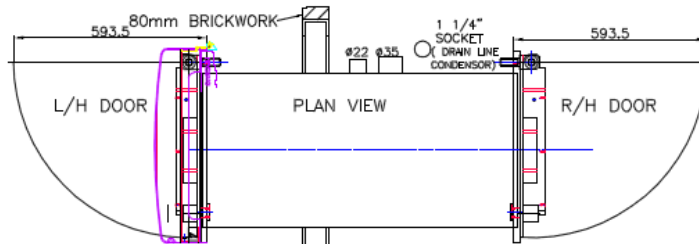


USED ON: 000-0000

COMPUTER GENERATED DRAWING

APPROVAL REQUIRED OF THIS DRAWING BEFORE MANUFACTURING CAN COMMENCE

- 1) CONFIRMATION OF WALL THICKNESS
- 2) HANDING OF DOOR ON EACH SIDE AS SHOWN



USED ON: 000-0000

Complying Standards

- PED Cat 2 Module A1 Notified Body: Royal & Sun alliance No. 0040
- Harmonised Standards applied: EMC BS EN 61326
- Community directives applied : Pressure Equipment Directive 97/23/EC
- Designed in accordance with BS2646 & BS5500 part 1 EN 1919-2-41
- Chamber and Door constructed of stainless steel BS1501-321 S31 et BS 1501-316 S 31

Information is subject to change to suit different options added. The information on this sheet is correct as of 6th September 2013. Please contact us if you have any queries.

