

Crystal DE

Specification for Crystal 300 DE Double Door "Pass Through" model, Equipped with a 14" 18kw steam generator

Design Features

- Double door "Pass-through"
- MP25 Controller at each end.
- Square Chamber
- Economical simple door closure
- Fixed Seal
- Economical space saving design
- Drip tray under door
- Fan assisted cooling

Capacities & Dimensions

Model

Autoclave weight
Export case size
External dimensions
Chamber dimensions
Usable chamber capacity

Crystal 300

550 kg
990w x 1870h x 1610d
790w x 1800h x 1405d
510w x 510h x 1030d
300 litres

Safe Design Operating Limits

Model

Max working temperature
Min working temperature
Min ambient temperature
Max ambient temperature
Max hydraulic pressure
Max working pressure
Max working vacuum
Boiler hydraulic pressure
Boiler working pressure

Crystal 300

138° C
7° C
11° C
28° C
4.14 Bar
2.62 Bar
-1 Bar
6 Bar
4 Bar

Site Requirements ('E' Models)

Electrical site requirements:

Model

Drain Requirement
Voltage
Phase requirement
Power consumption
Fuse rating

Switched RCD Required

Crystal 300

150°C 35mmØ copper
415 Volts
3ph/N 50/60 hz
18kw
40amp

Site Requirements ('DS' Models)

Electrical site requirements: :

Model

Mains Steam Supply
Drain Requirement
Voltage
Phase requirement
Power consumption
Fuse rating

Switched RCD Required

Crystal 300

35lb p/h @ 2.67 bar
150°C 35mmØ copper
240 Volts
1ph/N 50/60 hz
1kw
6amp

Optional Requirements

- Air supply at 38psi 7cfm for air ballasting option
- Backup Steam Generator requires 35amp 3ph/N 50/60hz power supply & a 45 litre header tank situated between 1 & 4 metres above the autoclave.
- Drain Line condenser will require a 15 litre header tank situated between 1-4 metres above the autoclave.

General Requirements

- Sodium Chloride within water supply MUST NOT exceed a level greater than 500 parts per million.
- Use regular mains water only, DO NOT use RO or Distilled water.
- A steam generator requires a 45 litre header tank situated between 1 & 4 metres above the autoclave.
- Drain requires a 35mmØ copper pipe located at floor level.

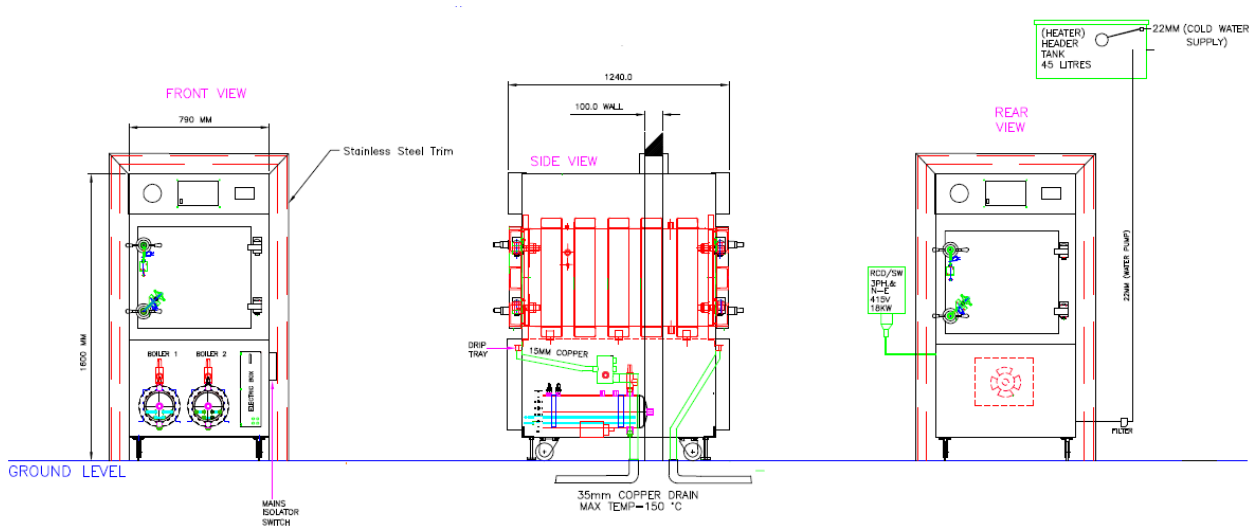
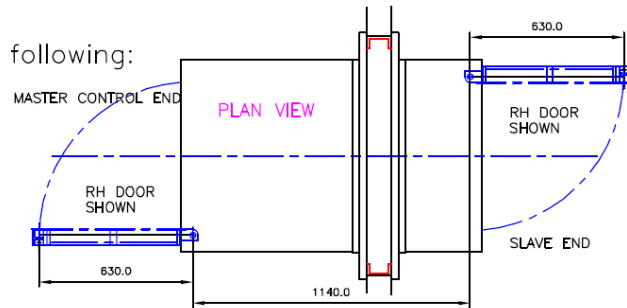


"The crystal is a powerful workhorse, combining large capacity with clever design features designed to save you time and money in the running of your lab..."

Crystal 300DE Installation Schematic

Confirmation is required of the following:

1. Handing of doors
2. Wall thickness



Complying Standards

- PED Cat 2 Module A1 Notified Body: Royal & Sun alliance No. 0040
- Harmonised Standards applied: EMC BS EN 61326
- Community directives applied : Pressure Equipment Directive 97/23/EC
- Designed in accordance with BS5500 & BS2646 part 1 EN 1919-2-41
- Chamber and Door constructed of stainless steel BS1501-321 S31 & BS 1501-316 S 31

Information is subject to change to suit different options added. The information on this sheet is correct as of 6th September 2013. Please contact us if you have any queries. E & OE

