



# Getinge K-Series

## Tabletop Sterilizers

This document is intended to provide information to an international audience outside of the US.

GETINGE 



# High-speed sterilization

## Superior capacity and efficiency

Getinge K-Series Sterilizers are exceptionally fast, high-capacity tabletop models. In fact, one sterilizer does the job of two.

In just 25 minutes, you can sterilize up to 10 trays using the B-process program. That means 20 trays per hour. If you only need a flash program for unwrapped solid instruments, it takes a mere 9 minutes.

It all means quickly getting the goods back in circulation, thereby sharply reducing the number of instruments your clinic requires.

Getinge is the world's largest supplier of sterilizers and washer-disinfectors, with equipment installed in more than 100 countries. In addition to equipment and

consumables, we offer architectural planning, training, traceability as well as service and support.

Buying your sterilizer or washer-disinfector from Getinge will ensure the peace of mind that comes with knowing that your equipment is designed to the highest standards of quality, performance and reliability.



# Rectangular chamber

utilizing nearly 100% of the volume

Getinge K-Series Sterilizers have rectangular chambers that utilize nearly 100% of the volume when sterilizing trays and cassettes. In a round chamber, 25% of the volume is wasted space.

The chamber volume of a tabletop sterilizer in liters provides a rough picture of the loading capacity, and this criteria works well as long as you compare sterilizers with the same chamber shape. However, if you compare sterilizers with different chamber shapes, the volume in liters may be misleading.

The chamber shape is decisive for the loading capacity, so don't just look at the liters, count the trays/cassettes!

## Safe sliding door

Did you know that sterilizer doors are subjected to a full ton of pressure? Conventional sterilizer doors have to rely on the hinges and lock to resist that force. Getinge K-Series Sterilizers offer a safer solution – a sliding door built into robust rails. This design also protects the user from contact with the hot inside surface of the door and doesn't interfere with the often limited space in front of the sterilizer.



15 l (5 trays\*) rectangular chamber utilizing the maximum volume.

## Easy to use and care for

User-friendliness and easy maintenance are other priorities in Getinge K-Series Sterilizers:

- Easy to use – simply load, close the door and push “start”
- Simple, low-cost maintenance thanks to the unique design with few components
- Stainless steel water tank with easy access for cleaning, which helps prevent the formation of unhygienic biofilm
- Low consumption of deionized water – just about 0.4 liters for a typical process
- Cycle documentation through either a printer, USB storage unit or a serial port connection for PC
- Easy connection to external water supply

\*Tray or dental cassette, 38 mm high.

# There's a size that's right for every practice or clinic

Getinge K-Series Sterilizers comprise three models with different chamber depths and load capacities. There's a size that's right for every practice or clinic.

The rectangular chamber can be utilized optimally for maximum loading capacity, ideal for dental trays, cassettes and racks. Instruments are sterilized and ready for use again in a very short time, so you need fewer instruments and can cut your investment costs – which means increased profitability.

## Getinge K5+ and K7+ for larger practices

Both Getinge K5+ and K7+ Sterilizers are ideal for practices / clinics with high utilization and turnover of sterile goods. The extra chamber depth in the Getinge K7+ Sterilizer also makes it suitable for those requiring sterilization of longer instruments, such as endoscopes and special tray systems, e.g. for implantology.

In just one hour, you can sterilize up to 20 instrument trays in a Getinge K5+ Sterilizer. And the 100 mm deeper Getinge K7+ Sterilizer handles 20 instrument trays plus 20 minitrays in the same short time. One such high-productivity sterilizer does the job of two!



Getinge K-Series is available in two different casing versions, either stainless steel or white casing.



**25-minute standard program**  
The standard B-process takes just 25 minutes



**15-minute special program**  
The dental special program (S-process) for max. 10 wrapped dental handpieces is ready in 15 minutes.

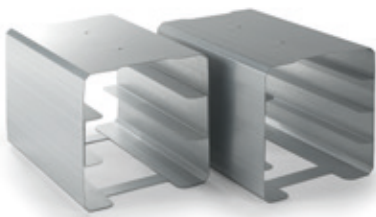


**9-minute flash program**  
The flash program (N-process) for unwrapped solid instruments takes a mere 9 minutes.



# Accessories

A selection of accessories for  
Getinge K-Series Sterilizers



Cassette racks



Dental cassette, complete with lid and insert, 287 x 186 x 39 mm



Trays, 380 x 190 x 38 mm, 330 x 190 x 38 mm or 100 x 190 x 38 mm



Different tray handles



Support for bags  
(to facilitate drying of goods)



Printer



Getinge log documentation  
for process data



Deionizer for the supply of water for  
steam production

There are many other accessories for Getinge K-Series Sterilizers. Visit [www.getinge.com](http://www.getinge.com) or ask your nearest Getinge dealer.

# Take care

– of your investment

Optimizing your equipment's services is often an untapped opportunity to maximize productivity and reduce costs. A Getinge Care service offering will ensure that your equipment always perform at peak levels allowing you to focus on saving lives.

## Prevent issues before they arise

Whether you're purchasing a new steam sterilizer or an entire CSSD, we'll be there to support you. By following a routine preventive maintenance schedule, Getinge Care keeps things running smoothly, with minimal interruption. If something should need urgent attention, our certified field service representatives will be there to promptly support you and resolve the issue.

With a Getinge Care package, you can forecast your costs for the full life cycle of your equipment, minimizing unplanned costs. Our financial services team can analyze your needs and numbers to deliver a service package that gives you the best output for your investment. Ask your Getinge representative for more information.

## Getinge Academy – the right training at the right time

Getinge Academy provides service, application, and technician training, as well as custom training when needed. Classes can be held at a Getinge Academy facility, on-site at your hospital, or online via web-based training programs.



### Getinge Care Standard

Supporting your internal technical service department



### Getinge Care Preventive

Scheduled maintenance intervals maximize uptime



### Getinge Care Plus

Uninterrupted protection with full cost control



### Getinge Care Premium

Full coverage for complete peace of mind



# Technical data

## Getinge K-Series standard programs

Process type	Program	Process time
B-process	134 °C Wrapped	~25 min
B-process	121 °C Wrapped	~35 min
B-process	134 °C Textile	~45 min
B-process	134 °C 18 minutes	~40 min
S-process	134 °C Dental special*	~16 min
N-process	134 °C Flash	~11 min

Test programs: Bowie & Dick, Leak test

Optional programs		
Liquid cycle	121 °C Liquid	~90 min
Customer defined	121 °C – 134 °C	~35 min

Process times are load dependent and approximate. They refer to a full process including drying with an average load. For more details see product specification.

\*For up to 10 wrapped dental handpieces.

## Validation

The sterilizers are equipped with connections for separate, external temperature and pressure gauges, for validation as per e. g. EN 554 and ISO 17665.

## Process documentation

Through either a printer, USB storage unit or a serial port connection for PC.

## Well-proven B-process

EN 13060, effective as from September 2004, is the European norm for small sterilizers. One part of the norm defines vacuum B-process sterilization of wrapped, hollow instruments and textiles. Getinge K-Series Sterilizers have had this capability since 1989.

## Chamber volume / max. load (textiles)

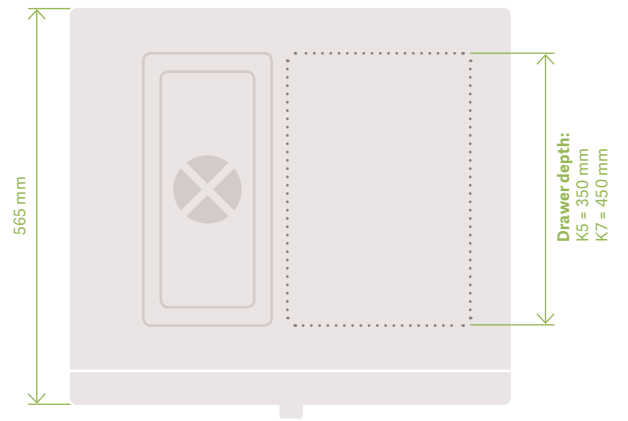
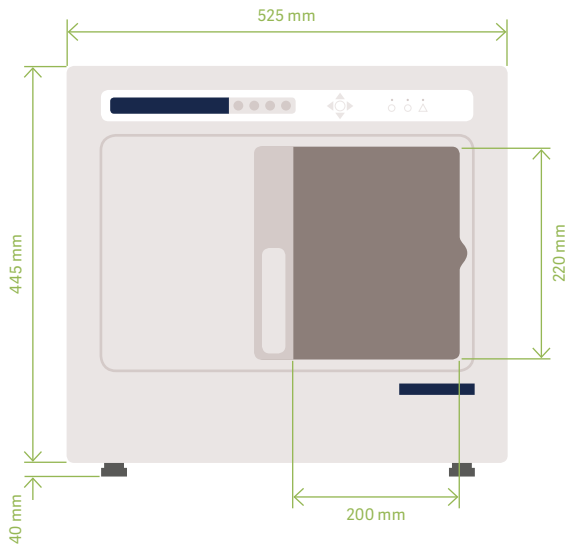
K5+ = 15 liters / 5 kg (2.5 kg)

K7+ = 20 liters / 7 kg (3.5 kg)

## Water connections and demands

- Water quality: distilled or deionized, max. 15 µS/cm
- Water consumption: approx. 0.4 l/cycle
- Tank volume: 5 l
- Water pressure: max. 0.5 bar when water connected
- Electrical: 1-phase, 230 V, 10 Amp.
- Noise level: < 60 dB





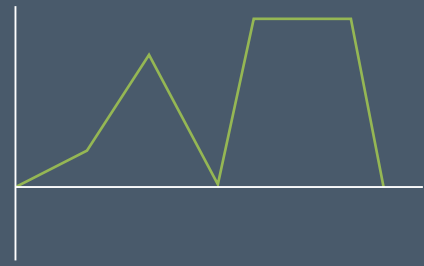
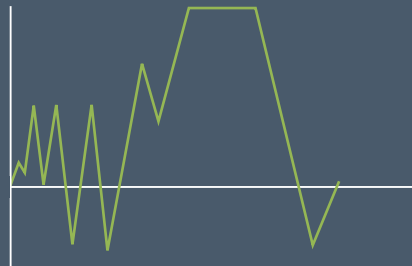
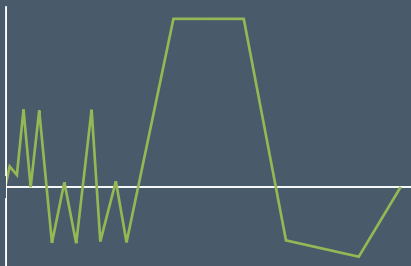
B-process



S-process  
(Dental special)



N-process



# A complete hygiene system

from the world's leading supplier

Getinge is the world's largest supplier of sterilizers and washer-disinfectors, with equipment installed in more than 100 countries.

In addition to Getinge K-Series and other table top sterilizers, Getinge offers a complete range of washer-disinfectors, both table top (Getinge Tablo) and under-counter (Getinge Claro) as well as larger models (Getinge 46-Series).

We also offer sealers, workstations, trolleys, storage cabinets, shelves and anything else you might need in order to ensure the most hygienic and efficient workflow.

**For more information, please contact your Getinge representative.**







Getinge is a global provider of innovative solutions for operating rooms, intensive care units, sterilization departments and for life science companies and institutions. Based on our firsthand experience and close partnerships with clinical experts, healthcare professionals and medtech specialists, we are improving the everyday life for people – today and tomorrow.

This document is intended to provide information to an international audience outside of the US.

**Getinge Infection AB** · PO Box 69 · SE-305 05 Getinge · Sweden · +46 10 335 00 00 · [info@getinge.com](mailto:info@getinge.com)

[www.getinge.com](http://www.getinge.com)